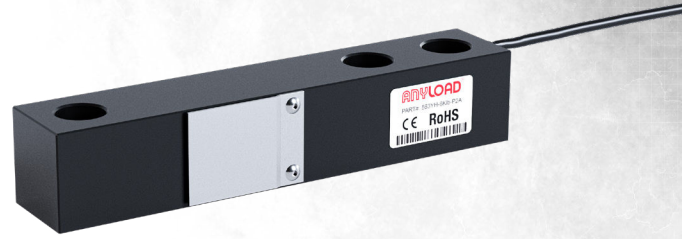


ANYLOAD®

1-855-269-5623
www.anyload.com



AGRICULTURAL
LOAD CELLS

Load Cells for Agricultural Machinery



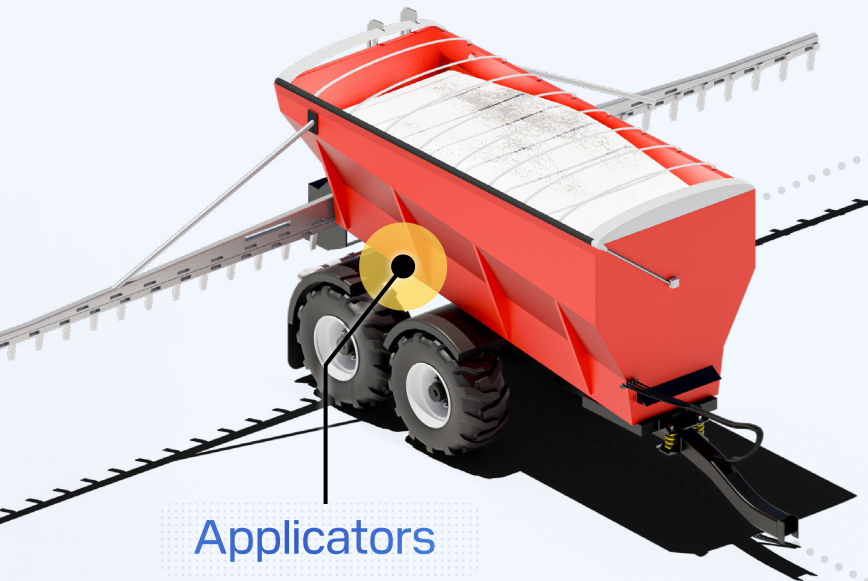
Spreaders



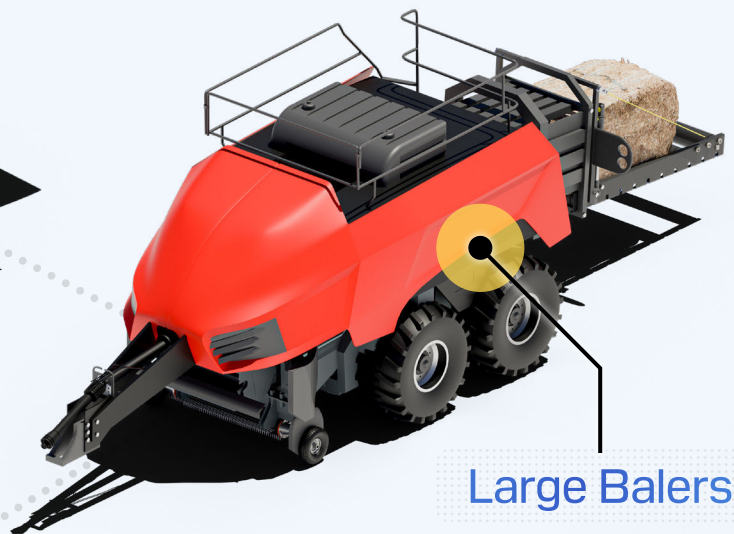
Tub Grinders



Bale Processors



Applicators



Large Balers

563WS-AA

Range of capacities available.

ALLOY STEEL IP67

STAINLESS STEEL

**also available*



Interchangeable with:



Topcon
Digi-Star
Dinamica Generale

563WS-AB

Range of capacities available.

ALLOY STEEL IP67

STAINLESS STEEL

**also available*



Interchangeable with:



Topcon
Digi-Star
Dinamica Generale

102MH-AA

Range of capacities available.

ALLOY STEEL IP67

STAINLESS STEEL

**also available*



***ELECTROPHORETIC PAINT**
No More Rust!



Interchangeable with:



Topcon
Digi-Star
Dinamica Generale

563YH-AA

Range of capacities available.

ALLOY STEEL IP67

STAINLESS STEEL

**also available*



***ELECTROPHORETIC PAINT**
No More Rust!



Interchangeable with:



Topcon
Digi-Star
Dinamica Generale

563WH-24A

Range of capacities available.

ALLOY STEEL IP67

STAINLESS STEEL

**also available*



NICKEL PLATING Available

Interchangeable with:



Dinamica Generale

563WH-24B

Range of capacities available.

ALLOY STEEL IP67

STAINLESS STEEL

**also available*



NICKEL PLATING Available

Interchangeable with:



Dinamica Generale

ELECTROPHORETIC PAINT OPTIONS

STAINLESS STEEL: Electrolytic Polishing + Electrophoretic Paint

ALLOY STEEL: Sandblasting Nickel Plating + Electrophoretic Paint

Junction Box & Amplifiers

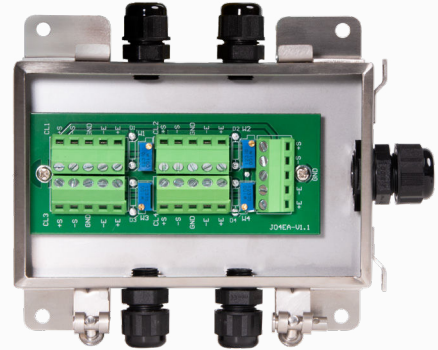
J04EA-16

ALUMINUM IP67



J04ES-FS

STAINLESS STEEL IP65



A1A-22B

ALUMINUM IP66

0V-10V or 4-20mA

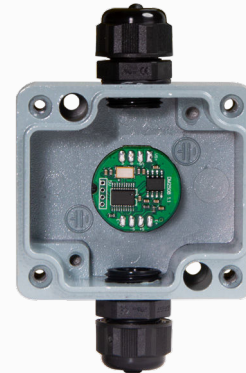


2 types of
analog output

A1A-D25

ALUMINUM IP66

RS232/RS485



2 types of
digital output

Cables & Connectors

Over Molded
M12 Connector

IP65

IP67

IP68

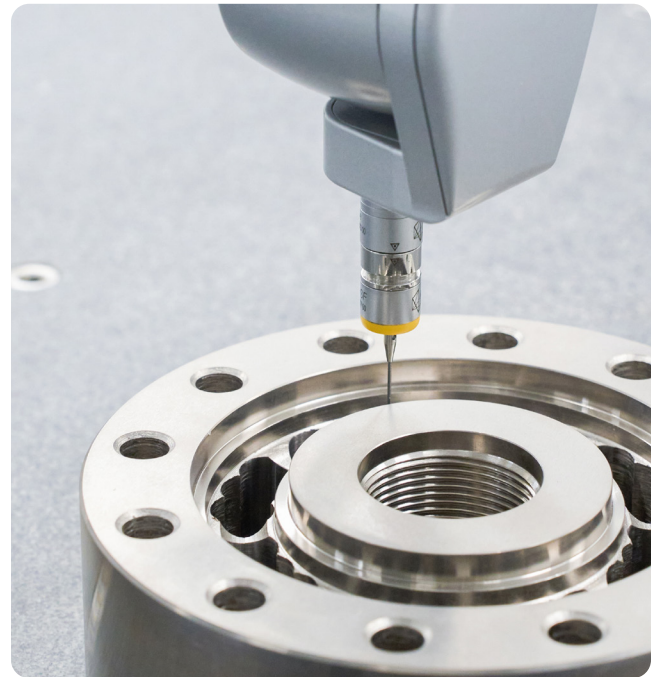
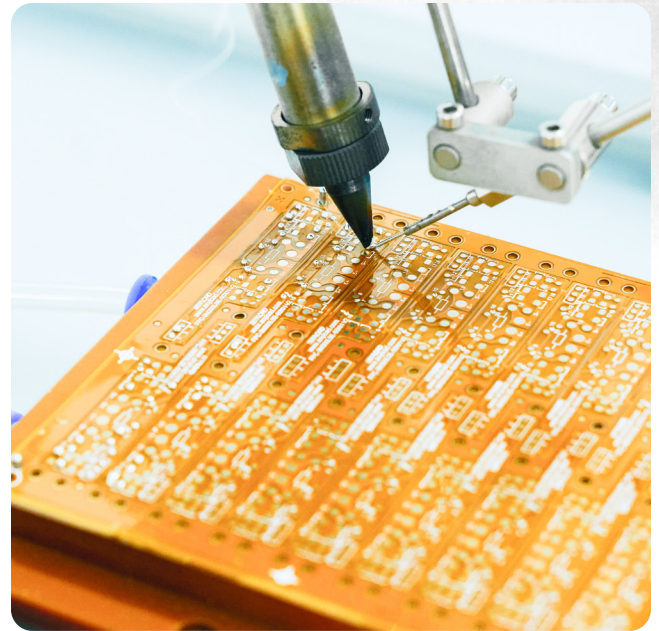
STAINLESS STEEL



Manufacturing Capability

ANYLOAD has the capability to fulfill orders from a few pieces to 10,000+ pieces. Our vertically integrated setup allows us to design, research, test, manufacture and perform quality assurance all under one roof.

Our structure allows us to move efficiently through every step of the process while keeping you 100% informed the entire way. We take pride in our customer service and engineering team's ability to communicate clearly to help complete your project on time and on budget.



ANYLOAD[®]

1-855-269-5623
www.anyload.com