

### Features:

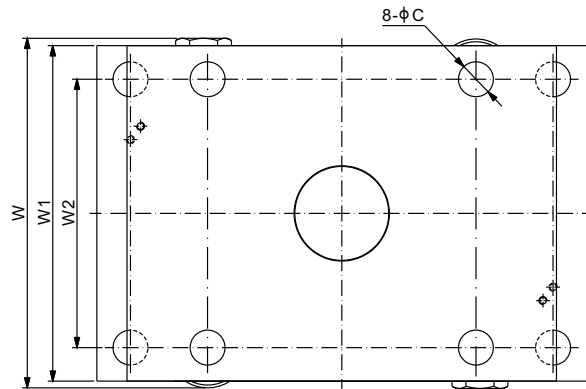
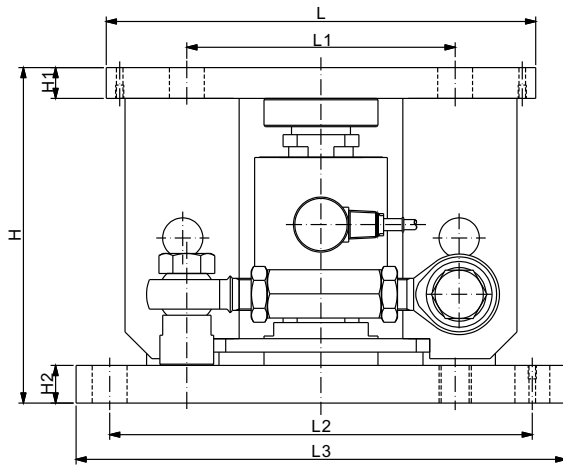
- 106RS Rocker Pin load cell & upper/lower Cups
- Capacities: 30t-100t
- Center pivoted and self-checking with uplift protection
- Additional pin slot to insert uplift protection pins that hold the top platform up safely while replacing load cell
- Optional stabilizer rod that restrains lateral forces, suitable for dynamic applications
- Integrated pivot allows for thermal expansion

### Load Cell Certifications:



Load Cell Not Included.

(NTEP & OIML up to 50t)



### DIMENSIONS

LOAD CELL CAPACITY	C	H	H1	H2	L	L1	L2	L3	W	W1	W2
<b>t/mm</b>											
30-40	26.0	235.0	23.0	28.0	250.0	200.0	315.0	365.0	260.0	250.0	200.0
50	26.0	250.0	23.0	28.0	250.0	200.0	315.0	365.0	260.0	250.0	200.0
100	32.0	329.5	30.0	33.0	300.0	235.0	375.0	440.0	320.0	300.0	235.0
<b>Klb/inches</b> (conversion of above dimensions)											
66.14-88.18	1.02	9.25	0.91	1.10	9.84	7.87	12.40	14.37	10.24	9.84	7.87
110.23	1.02	9.84	0.91	1.10	9.84	7.87	12.40	14.37	10.24	9.84	7.87
220.46	1.26	12.97	1.18	1.30	11.84	9.25	14.76	17.32	12.60	11.81	9.25

### PART NUMBER

Load Cell Capacity	Part No.	Shipping Weight Approx. (kg/lb)
30t-40t.....	106RSM1-(30-40)t .....	-
50t .....	106RSM1-50t.....	-
100t.....	106RSM1-100t.....	-