

102ES

Double Ended Beam

IP68

STAINLESS STEEL
WELDED SEAL

Options:

- FM, ATEX, IECEx Approved

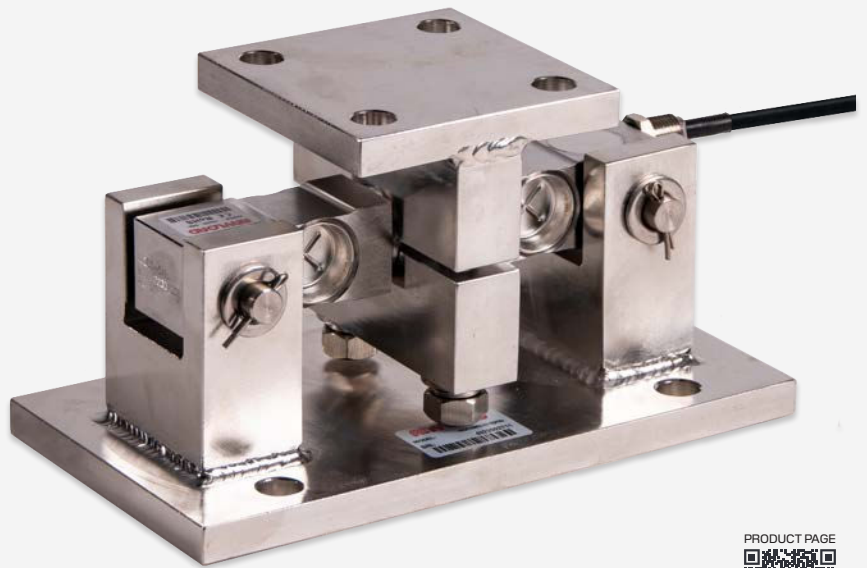


102ESM2

Compression Weigh Module

Features:

- Self-checking with anti-lifting protection





Complete Kit Includes

- ✓ 102ES Load Cells
- ✓ 102ESM2 Mounts
- ✓ Junction Box (Signal or Exc)
- ✓ Load Cell Cable

Part Number / Capacity	J-Box	Cable
3 Module Kit	*J-Box (specify model when ordering)	
MK3-102ESM2- 2.5Klb-S	J04SS	1 roll (65ft/20m)
MK3-102ESM2- 5Klb-S		
MK3-102ESM2- 10Klb-S		
MK3-102ESM2- 15Klb-S		
MK3-102ESM2- 25Klb-S		
4 Module Kit	*J-Box (specify model when ordering)	
MK4-102ESM2- 2.5Klb-S	J04SS	1 roll (65ft/20m)
MK4-102ESM2- 5Klb-S		
MK4-102ESM2- 10Klb-S		
MK4-102ESM2- 15Klb-S		
MK4-102ESM2- 25Klb-S		

Features

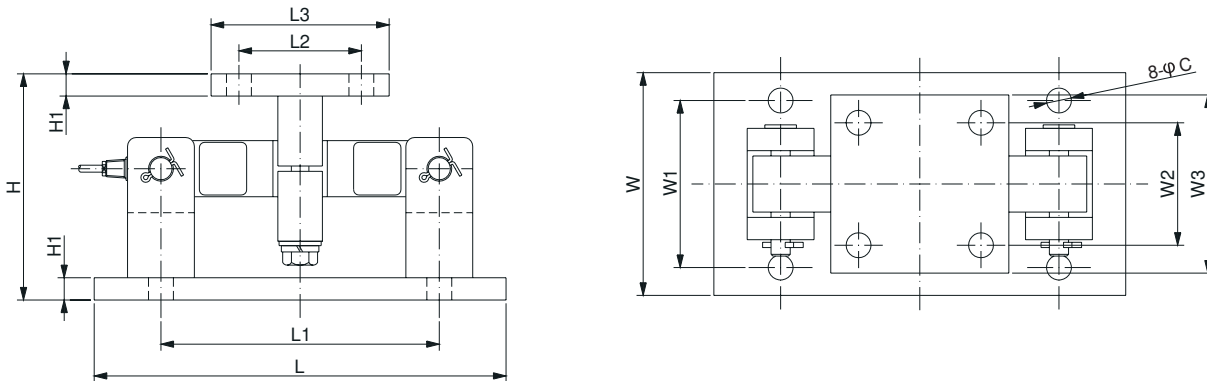
- Capacities (per module) 1,000-75,000 lb
- Low Maintenance, High Performance
- Allowance for thermal expansion
- Self-checking with anti-lifting protection

Applications

- Medium to heavy capacity tanks & hoppers

J-Box Options: Signal or Excitation / Aluminum, Stainless Steel or Fiberglass Enclosure

Drawings



Dimensions (inches)

Capacity	H	H1	L	L1	L2	L3	W	W1	W2	W3	C
1-5Klb	5.00	0.50	9.25	6.25	2.75	4.00	5.00	3.75	2.75	4.00	0.56
10-25Klb	7.89	0.75	12.00	7.50	6.00	8.00	8.00	6.00	6.00	8.00	0.81
35Klb	8.02	0.75	12.00	7.50	6.00	8.00	8.00	8.00	6.00	8.00	0.81
50-75Klb	9.31	1.00	16.25	11.50	6.50	9.00	12.00	9.50	6.50	9.00	0.81