

102BH

Double Ended Beam

IP67 / IP68

NICKLE PLATED
ALLOY STEEL

Options:

- FM, ATEX, IECEx Approved
- Lightning Protection
- Rodent Protection Cable
- Welded Seal IP68
- Stainless Steel Load Cell: 102BS

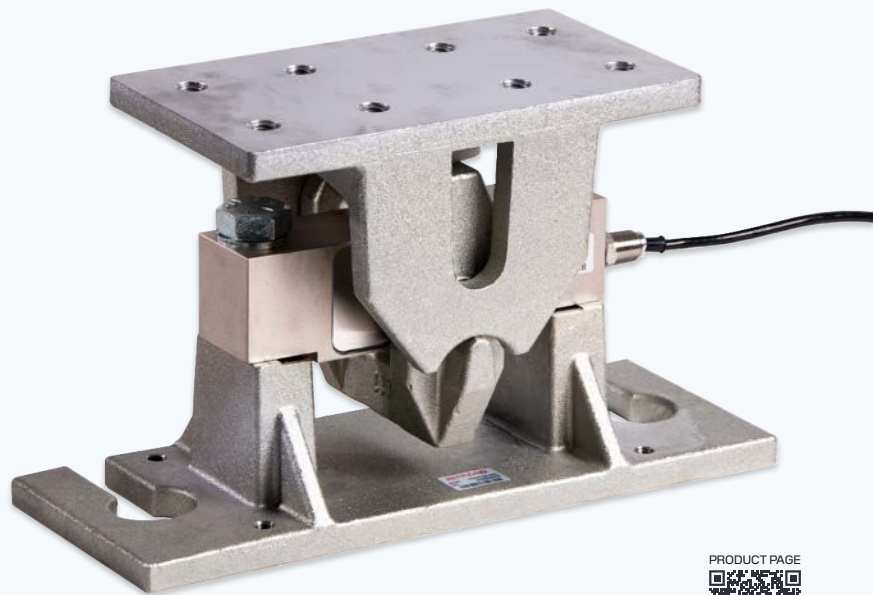


102BHM1

Compression Weigh Module

Features:

- Center pivoted with self-aligning suspension link design
- Allows for multi-directional movements
- No check rods required





Complete Kit Includes

- ✓ 102BH Load Cells
- ✓ 102BHM1 Mounts
- ✓ Junction Box (Signal or Exc)
- ✓ Load Cell Cable

Features

- Capacities (per module) 10Klb-200Klb
- Center pivoted with self-aligning suspension link design
- Allows for multi-directional movements
- No check rods required

Applications

- Conversion on Truck Scales, Cattle Scales & Platform Scales

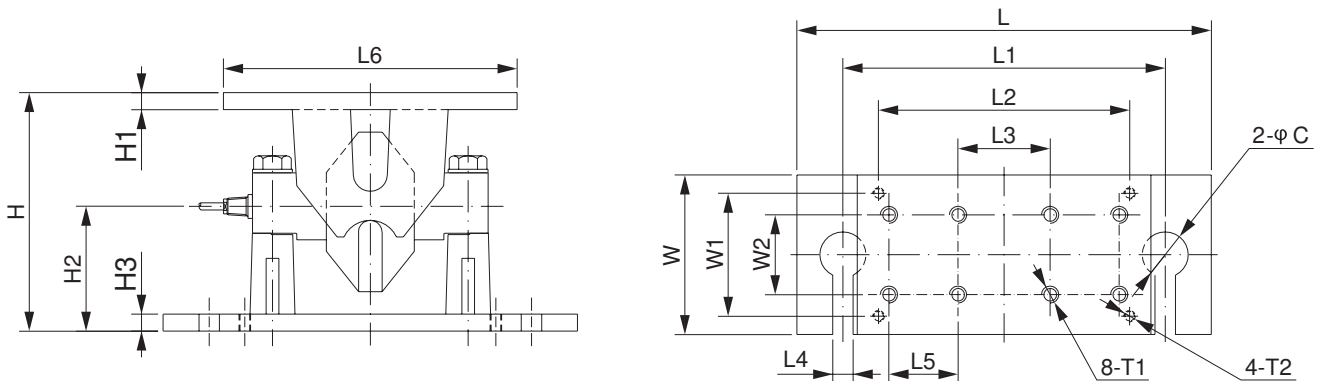
Part Number / Capacity	J-Box	Cable
4 Module Kit	*J-Box (specify model when ordering)	
MK4-102BHM1- 50Klb-S	J04SA-16	1 roll (65ft/20m)
MK4-102BHM1- 60Klb-S		
MK4-102BHM1- 75Klb-S		
6 Module Kit	*J-Box (specify model when ordering)	
MK6-102BHM1- 50Klb-S	J06SS	1 roll (65ft/20m)
MK6-102BHM1- 60Klb-S		
MK6-102BHM1- 75Klb-S		
8 Module Kit	*J-Box (specify model when ordering)	
MK8-102BHM1- 50Klb-S	J08SS	1 roll (65ft/20m)
MK8-102BHM1- 60Klb-S		
MK8-102BHM1- 75Klb-S		

MK4 J-Box: Signal or Excitation / Aluminum, Stainless Steel or Fiberglass Enclosure

MK6 J-Box: Signal or Excitation

MK8 J-Box: Signal or Excitation / Aluminum, Stainless Steel or Fiberglass Enclosure

Drawings



Dimensions (inches)

Capacity	C	H	H1	H2	H3	L	L1	L2	L3	L4	L5	L6	W	W1	W2	T1	T2
10-25Klb	1.75	8.62	0.62	4.45	0.59	14.00	11.00	8.66	3.00	0.87	-	6.00	6.00	4.53	3.00	5/8-11 UNC-2B	1/2-13 UNC
50-75Klb	2.00	10.47	0.75	5.44	0.75	18.00	14.00	10.91	4.00	0.87	3.00	12.76	7.00	5.39	3.50	3/4-10 UNC-2B	1/2-13 UNC
100-125Klb	1.13	14.61	0.98	-	0.98	20.00	17.01	-	10.98	-	-	14.02	11.02	7.87	5.75	-	-
200-250Klb	1.34	19.88	1.57	-	1.57	24.49	21.50	-	14.02	-	-	17.01	15.12	12.01	10.75	-	-