



FSP Series Floor Scale

Installation Manual (v2409)

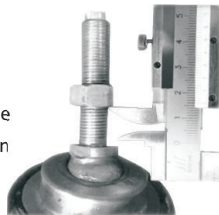


Safety Recommendations:

- ◆ Please read this manual carefully before operating the scale.
- ◆ Operate the scale strictly in accordance with this manual and keep the manual for future reference.
- ◆ Follow all safety practices when handling this unit due to its heavy weight
- ◆ Unplug power supply during installation, maintenance or level bubble adjustment.
- ◆ To ensure high accuracy, make sure the operating temperature meets the specified requirements before switching on the scale.
- ◆ Avoid using or storing the scale in hazardous or explosive environments

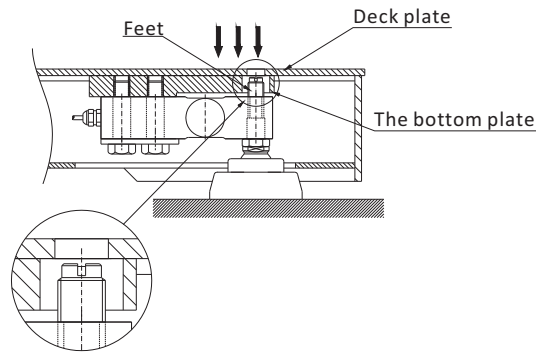
Load Cell Feet Installation:

Mount the AMF load cell foot to each 563YH or 563YH-23 load cell. Turn the AMF foot clockwise to tighten and leave a clearance of around 15-20mm between the jam nut and the fixed nut



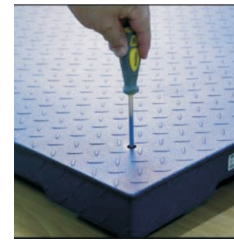
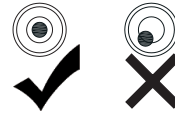
Place the floor scale on a leveled surface, ensuring that all feet are in full contact with the ground.

No feet shall touch the bottom plate or deck plate:



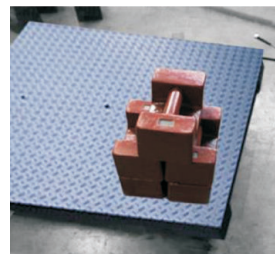
Level Bubble Adjustment:

Adjust each foot using a flat screwdriver by turning it clockwise or counter clockwise until the level bubble stays centered. Ensure that all feet are fully in contact with the ground.



Corner Adjustment & Tuning the J04EA Junction Box:

Install the weighing indicator and connect it to output terminal of the J04EA junction box. Calibrate the scale using a test weight that is at least 75% of the scale's maximum capacity (e.g., for a 1,000lb max capacity, use at least 750 lb test weight). Refer to the indicator's manual for detailed calibration instructions.



After calibrating, place a test weight approximately 1 / 3 of the scale's maximum capacity in each corner and record the readings, including the reading at the center of the scale (e.g., for a 1,000lb max capacity, use a 325lb test weight).

Identify the corner with the highest or lowest reading and adjust its corresponding potentiometer at the J04EA junction box. If you are adjusting the lowest reading, turn the potentiometer clockwise to increase the reading, bringing it closer to the center reading. If adjusting the highest reading, turn the potentiometer counterclockwise to decrease it.

Repeat the tuning process until the readings from all corners and the center are nearly identical.

Then, lock the bolts of the AMF feet using two wrenches-one on the jam nut and the other on the fixed nut. During this stage, ensure that the bubble level remains centered; if not, adjust the feet again. After locking the bolts on each foot, check the readings at each corner against the center reading. If there is significant variation, you may need to adjust the J04EA junction box again until the readings are nearly identical



Recalibrate the scale using a test weight that is at least 75% of the scales's maximum capacity, as recommended (e.g., for a 1,000lb max capacity, use at least 750lb test weight).

⚠ Cautions:

The scale structure and several points overloading protection design support the high accuracy of floor scale.

The occasional overloading may not damage the scale body but the accuracy of overloading range may not be achieved. If scale damage is caused by overloading, it shall not be covered by warranty.

