



# Load Cells for Agricultural Machinery



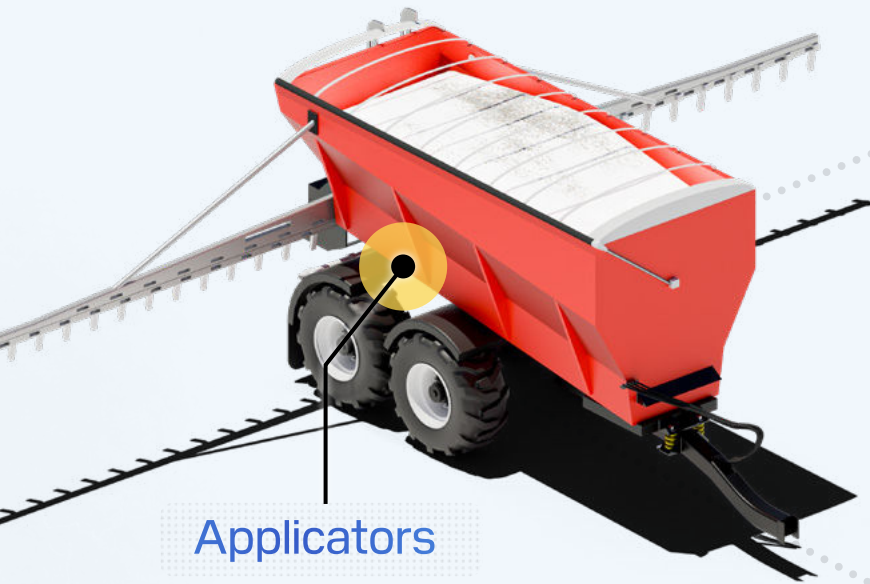
Spreader



Tub Grinders



Bale Processors



Applicators



Large Balers

## 563WS-YZ-23A

Range of capacities available.

**ALLOY STEEL** IP67

**STAINLESS STEEL**

*\*also available*



Interchangeable with:



Topcon  
Digi-Star  
Dinamica Generale

## 563WS-YZ-23B

Range of capacities available.

**ALLOY STEEL** IP67

**STAINLESS STEEL**

*\*also available*



Interchangeable with:



Topcon  
Digi-Star  
Dinamica Generale

## 102MHSA

Range of capacities available.

**ALLOY STEEL** IP67

**STAINLESS STEEL**

*\*also available*



**\*ELECTROPHORETIC PAINT**  
*No More Rust!*



Interchangeable with:



Topcon  
Digi-Star  
Dinamica Generale

## 563YH-P2A

Range of capacities available.

**ALLOY STEEL** IP67

**STAINLESS STEEL**

*\*also available*



**\*ELECTROPHORETIC PAINT**  
*No More Rust!*



Interchangeable with:



Topcon  
Digi-Star  
Dinamica Generale

## 563WH-24A

Range of capacities available.

**ALLOY STEEL** IP67

**STAINLESS STEEL**

*\*also available*



*NICKEL PLATING Available*

Interchangeable with:



Dinamica Generale

## 563WH-24B

Range of capacities available.

**ALLOY STEEL** IP67

**STAINLESS STEEL**

*\*also available*



*NICKEL PLATING Available*

Interchangeable with:



Dinamica Generale

## ELECTROPHORETIC PAINT OPTIONS

**STAINLESS STEEL:** Electrolytic Polishing + Electrophoretic Paint

**ALLOY STEEL:** Sandblasting Nickel Plating + Electrophoretic Paint



# Junction Box & Amplifiers

**J04EA-16**

ALUMINUM IP67



**J04ES-FS**

STAINLESS STEEL IP65



**A1A-22B**

ALUMINUM IP66

0V-10V or 4-20mA



2 types of  
*analog output*

**A1A-D25**

ALUMINUM IP66

RS232/RS485



2 types of  
*digital output*

## Cables & Connectors

Over Molded  
M12 Connector

IP65

IP67

IP68

STAINLESS STEEL



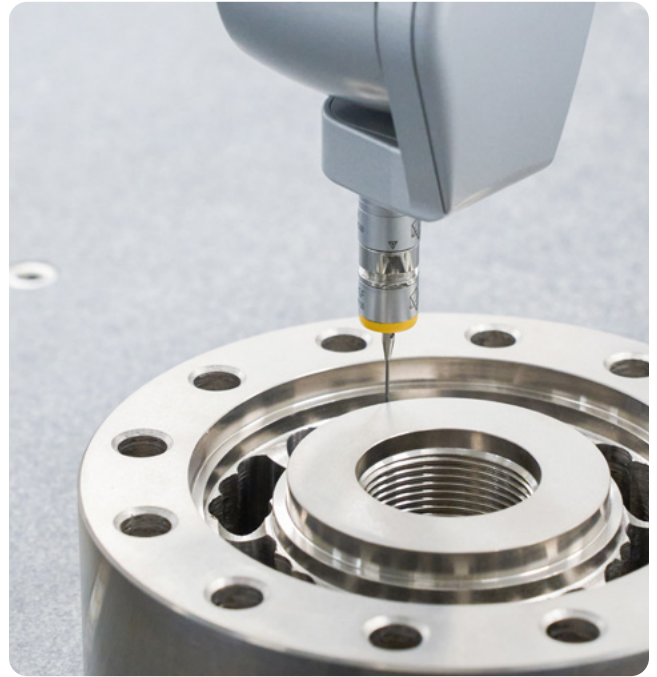
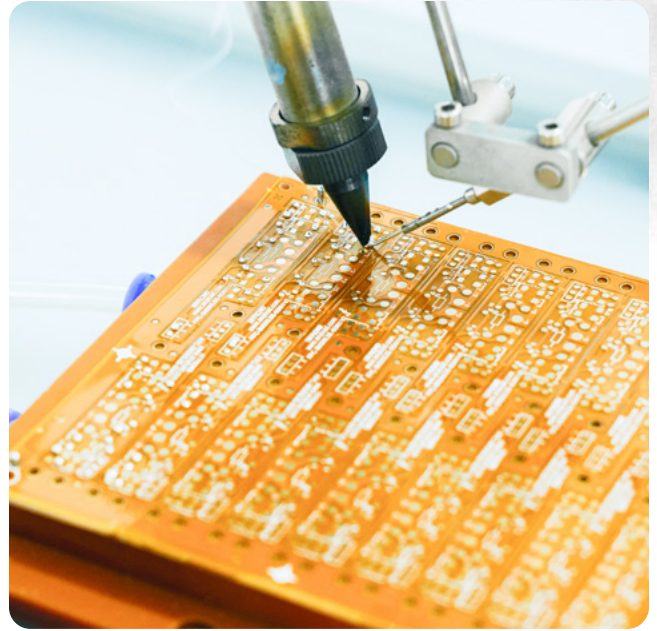
RODENT  
PROTECTION



# Manufacturing Capability

ANYLOAD has the capability to fulfill orders from a few pieces to 10,000+ pieces. Our vertically integrated setup allows us to design, research, test, manufacture and perform quality assurance all under one roof.

Our structure allows us to move efficiently through every step of the process while keeping you 100% informed the entire way. We take pride in our customer service and engineering team's ability to communicate clearly to help complete your project on time and on budget.



**ANYLOAD<sup>®</sup>**

1-855-269-5623  
**[www.anyload.com](http://www.anyload.com)**