

### 563YS30 Single Ended Beam STAINLESS STEEL

#### Features:

- NTEP: 500lb-2.5Klb, 1:5000 Class III, Single Cell
- NTEP: 500lb-2.5Klb, 1:9500 Class III, Multiple Cell
- NTEP: 4Klb-20Klb, 1:6000 Class III, Single Cell
- NTEP: 4Klb-20Klb, 1:10 000 Class III, Multiple Cell
- 1Klb-5Klb: OIML MAA C4, Y=15000
- 10Klb-20Klb: OIML MAA C6, Y=8500
- Welded Seal **IP68**

#### Options:

- Lightning Protection
- Rodent Protection
- FM, ATEX, IECEx Approved

SCAN FOR  
PRODUCT PAGE



**CE** **RoHS**

### 563YSM3 Weigh Module STAINLESS STEEL

For 563YS Load Cell

#### Features:

- Capacities: 500lb-10Klb/250kg-5t
- Anti-lifting and overloading protection
- Rocker pin loading design
- Equipped with lateral stops

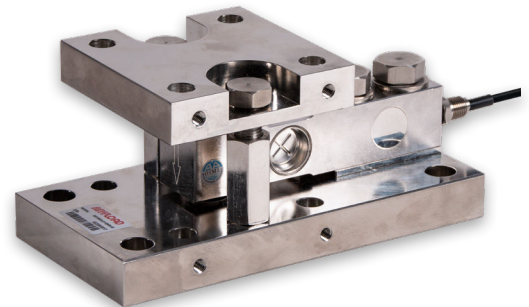
#### Applications:

- Light to medium tanks and hoppers

SCAN FOR  
PRODUCT PAGE



Plate included for easy installation.





## Complete Kit Includes

- ✓ 563YS30 Load Cells
- ✓ 563YSM3 Mounts
- ✓ Junction Box (Signal or Exc)
- ✓ Load Cell Cable

| Part Number / Capacity       | J-Box                                | Cable             |
|------------------------------|--------------------------------------|-------------------|
| <b>3 Module Kit</b>          | *J-Box (specify model when ordering) |                   |
| MK3-563YSM3- <b>2.5Klb-E</b> | <b>J04ES</b>                         | 1 roll (20m/65ft) |
| MK3-563YSM3- <b>4Klb-E</b>   |                                      |                   |
| MK3-563YSM3- <b>10Klb-E</b>  |                                      |                   |
| <b>4 Module Kit</b>          | *J-Box (specify model when ordering) |                   |
| MK4-563YSM3- <b>2.5Klb-E</b> | <b>J04ES</b>                         | 1 roll (20m/65ft) |
| MK4-563YSM3- <b>4Klb-E</b>   |                                      |                   |
| MK4-563YSM3- <b>10Klb-E</b>  |                                      |                   |

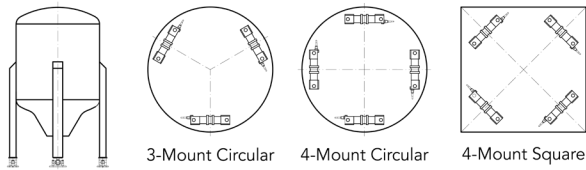
## Features

- Capacities (per module) 2,500-10,000 lb
- Low maintenance, High performance
- Allowance for thermal expansion
- Self-checking with anti-lifting protection

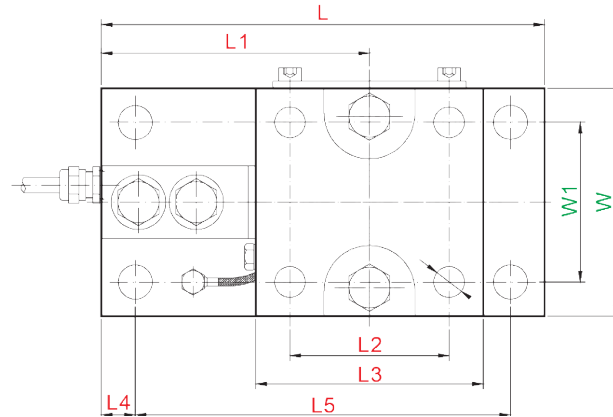
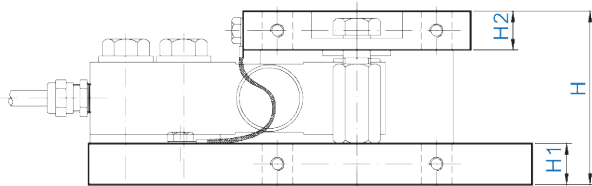
**J-Box Options:** Signal or Excitation / Aluminum, Stainless Steel or Fiberglass Enclosure

## Applications

- Light to medium tanks and hoppers



## Drawings



## Dimensions (inches)

| Capacity   | H    | H1   | H2   | L    | L1   | L2   | L3   | L4   | L5   | W    | W1   |
|------------|------|------|------|------|------|------|------|------|------|------|------|
| 500lb-4Klb | 2.99 | 0.71 | 0.67 | 7.68 | 4.65 | 2.76 | 3.94 | 0.59 | 6.50 | 3.94 | 2.76 |
| 5-10Klb    | 4.33 | 1.06 | 0.98 | 9.57 | 6.00 | 3.35 | 4.72 | 0.75 | 8.07 | 4.72 | 3.35 |

Sold by: