

563YH Single Ended Beam NICKLE PLATED ALLOY STEEL

Features:

- NTEP: 250lb-2.5Klb, 200kg-1t, 1:9500 Class III, Multiple Cell
- NTEP: 250lb-2.5Klb, 200kg-1t, 1:5000 Class III, Single Cell
- 1Klb-5Klb & 500kg-2.5t: **OIML MAA C4**, Y=15 000
- 10Klb-20Klb & 3t-10t: **OIML MAA C6**, Y=8500
- Wide Capacity Range: from 100lb to 20t
- Wide compensated temperature range: -10°C to +50°C

Options:

- Lightning Protection
- Rodent Protection
- FM, ATEX, IECEx Approved



563YHM2 Weigh Module ALLOY STEEL

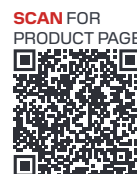
For 563YH Load Cell

Features:

- Tension load applied to the load cell is converted to compression load application for the weigh module
- Center pivoted and self-checking
- Sliding pin design for thermal expansion and contraction

Applications:

- Medium capacity tanks, hoppers, blenders and conveyors





Complete Kit Includes

- ✓ 563YH Load Cells
- ✓ 563YHM2 Mounts
- ✓ Junction Box (Signal or Exc)
- ✓ Load Cell Cable

Part Number / Capacity	J-Box	Cable
3 Module Kit	*J-Box (specify model when ordering)	
MK3-563YHM2- 1Klb -E	J04EA-16	1 roll (20m/65ft)
MK3-563YHM2- 2.5Klb -E		
MK3-563YHM2- 4Klb -E		
4 Module Kit	*J-Box (specify model when ordering)	
MK4-563YHM2- 1Klb -E	J04EA-16	1 roll (20m/65ft)
MK4-563YHM2- 2.5Klb -E		
MK4-563YHM2- 4Klb -E		

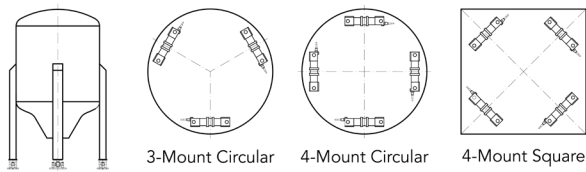
Features

- Capacities (per module) 1000-4,000 lb
- Low maintenance, High performance
- Allowance for thermal expansion
- Self-checking with anti-lifting protection

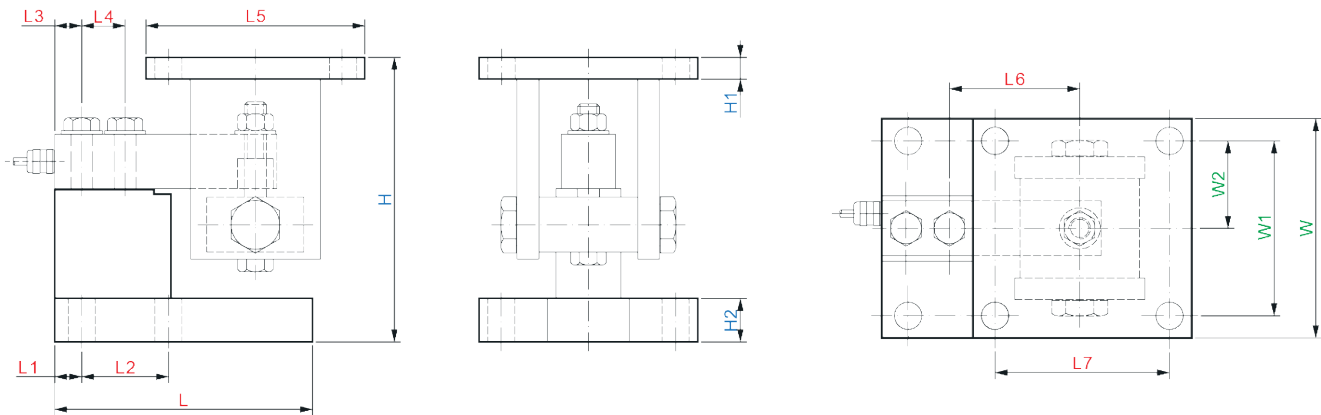
J-Box Options: Signal or Excitation / Aluminum, Stainless Steel or Fiberglass Enclosure

Applications

- Medium capacity tanks, hoppers, blenders and conveyors



Drawings



Dimensions (inches)

Capacity	L	L1	L2	L3	L4	L5	H _{Min/Max}	H1	H2	L6	L7	W	W1	W2
100lb-4Klb	5.98	0.67	2.00	0.62	1.00	5.04	6.50/6.69	0.50	1.00	3.00	4.02	5.04	4.02	2.01

Sold by: