

102TH Double Ended Beam NICKLE PLATED ALLOY STEEL

Features:

- NTEP: 1:10 000 Class III L, Multiple Cell
- 11t-55t: OIML MAA C4, Y=15 000
- Wide Capacity Range: from 25Klb to 125Klb
- Wide compensated temperature range: -10°C to +50°C

Options:

- Lightning Protection
- Rodent Protection
- FM, ATEX, IECEx Approved
- Environmentally Sealed / IP67



102THM5 Weigh Module ALLOY STEEL

For 102TH Load Cell

Features:

- Low maintenance, High performance
- Center pivoted, end loaded and self centering
- Multi-directional movements in the horizontal plane
- Links provide optimal loading conditions for the load cell
- Accommodates for thermal movement

Applications:

- Conversion on Truck Scales, Cattle Scales & Platform Scales





Complete Kit Includes

- ✓ 102TH Load Cells
- ✓ 102THM5 Mounts
- ✓ Junction Box (Signal or Exc)
- ✓ Load Cell Cable

Part Number / Capacity	J-Box	Cable
4 Module Kit	*J-Box (specify model when ordering)	
MK4-102THM5- 50Klb -E	J04EA-16	1 roll (20m/65ft)
MK4-102THM5- 60Klb -E		
MK4-102THM5- 75Klb -E		
6 Module Kit	*J-Box (specify model when ordering)	
MK6-102THM5- 50Klb -E	J06ES	1 roll (20m/65ft)
MK6-102THM5- 60Klb -E		
MK6-102THM5- 75Klb -E		
8 Module Kit	*J-Box (specify model when ordering)	
MK8-102THM5- 50Klb -E	J08ES	1 roll (20m/65ft)
MK8-102THM5- 60Klb -E		
MK8-102THM5- 75Klb -E		

Features

- Capacities (per module) 50,000-75,000 lb
- Center pivoted, end loaded, self centering
- Allows for multi-directional movements in the horizontal plane
- Links provide optimal loading conditions
- Accommodates for thermal movement
- Load Cell Approvals: NTEP, OIML, FM

Applications

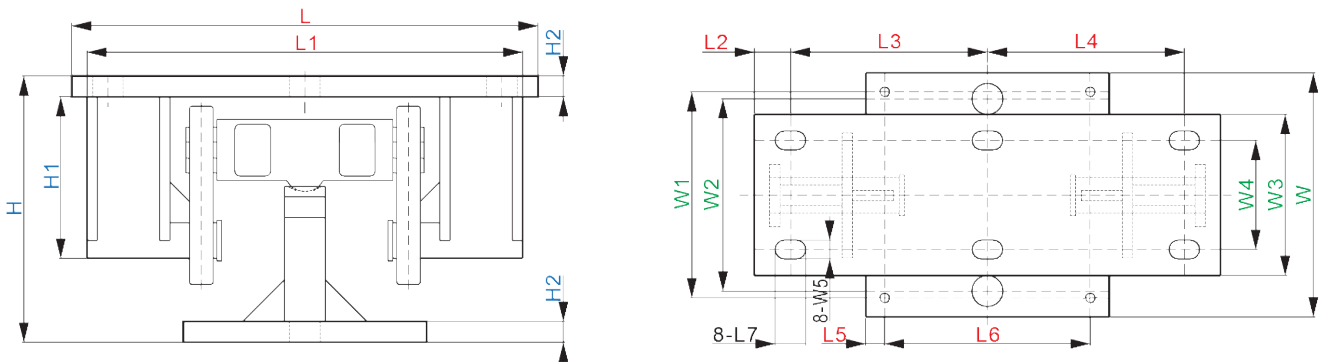
- Conversion on Truck Scales, Cattle Scales & Platform Scales

MK4 J-Box: Signal or Excitation / Aluminum, Stainless Steel or Fiberglass Enclosure

MK6 J-Box: Signal or Excitation

MK8 J-Box: Signal or Excitation / Aluminum, Stainless Steel or Fiberglass Enclosure

Drawings



Dimensions (inches)

Capacity	L	L1	H	H1	H2	L2	L3	L4	L5	L6	L7	W	W1	W2	W3	W4	W5
50-75Klb	22.5	21.02	12.82	7.78	1.00	1.75	9.50	9.50	0.91	9.92	1.48	11.75	9.92	9.25	7.75	5.25	0.91

Sold by:

