

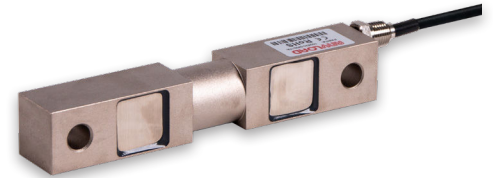
102EH Double Ended Beam NICKLE PLATED ALLOY STEEL

Features:

- Wide Capacity Range: from 1Klb to 300Klb
- Wide compensated temperature range: -10°C to +50°C
- Environmentally Sealed / IP67

Options:

- Lightning Protection
- Rodent Protection
- FM, ATEX, IECEx Approved



RoHS



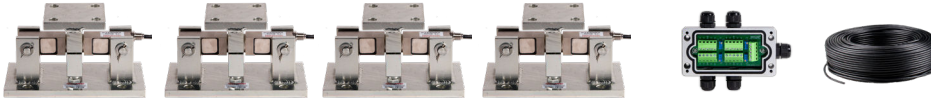
102EHM2 Weigh Module ALLOY STEEL

For 102EH Load Cell

Features:

- Low maintenance, High performance
- Allowance for thermal expansion
- Self-checking with anti-lifting protection
- Capacities: 1Klb-75Klb





Complete Kit Includes

- ✓ 102EH Load Cells
- ✓ 102EHM2 Mounts
- ✓ Junction Box (Signal or Exc)
- ✓ Load Cell Cable

Part Number / Capacity	J-Box	Cable
3 Module Kit	*J-Box (specify model when ordering)	
MK3-102EHM2- 5Klb -E	J04EA-16	1 roll (20m/65ft)
MK3-102EHM2- 25Klb -E		
MK3-102EHM2- 60Klb -E		
4 Module Kit	*J-Box (specify model when ordering)	
MK4-102EHM2- 5Klb -E	J04EA-16	1 roll (20m/65ft)
MK4-102EHM2- 25Klb -E		
MK4-102EHM2- 60Klb -E		

J-Box Options: Signal or Excitation / Aluminum, Stainless Steel or Fiberglass Enclosure

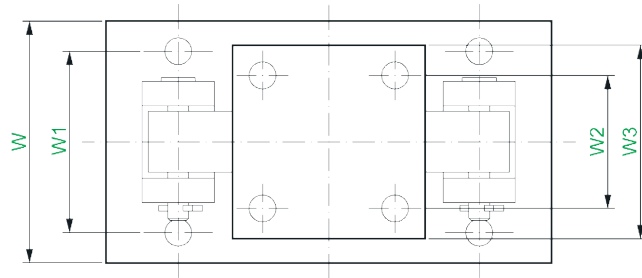
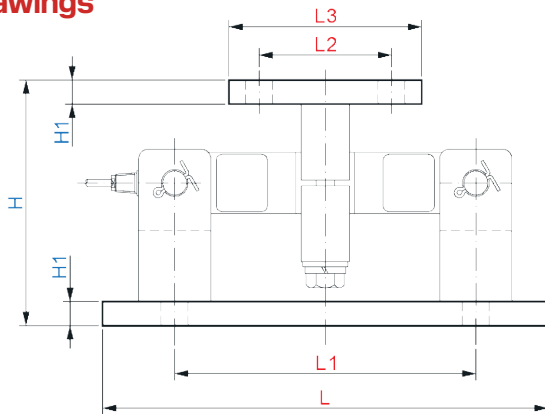
Features

- Capacities (per module) 5,000-60,000 lb
- Low maintenance, High performance
- Allowance for thermal expansion
- Self-checking with anti-lifting protection

Applications

- Medium to heavy capacity tanks & hoppers

Drawings



Dimensions (inches)

Capacity	L	L1	L2	L3	H	H1	W	W1	W2	W3	C
1-5Klb	9.25	6.25	2.75	4.00	5.00	0.50	5.00	3.75	2.75	4.00	0.56
10-25Klb	12.00	7.50	6.00	8.00	7.89	0.75	8.00	6.00	6.00	8.00	0.81
50-75Klb	16.25	11.50	6.50	9.00	9.31	1.00	12.00	9.50	6.50	9.00	0.81

Sold by:

