

102BH Double Ended Beam NICKLE PLATED ALLOY STEEL

Features:

- NTEP: 25Klb-125Klb, 1:10 000 Class III, Multiple Cell
- 11t-55t: OIML MAA C3, Y=7500
- Wide Capacity Range: from 10Klb to 400 Klb
- Wide compensated temperature range: -10°C to +50°C

Options:

- Lightning Protection
- Rodent Protection
- FM, ATEX, IECEx Approved
- Stainless Steel & Welded Seal **IP68**



102BHM1 Weigh Module ALLOY STEEL

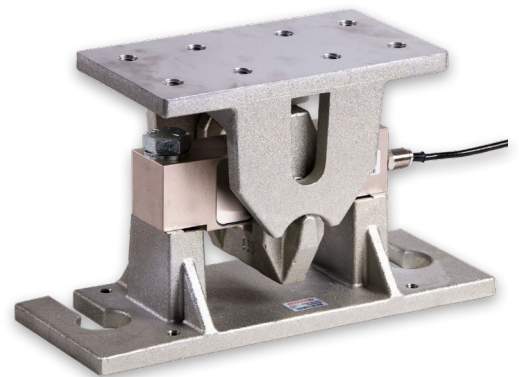
For 102BH Load Cell

Features:

- Low maintenance, High performance
- Center pivoted with self-aligning suspension link design
- Allows for multi-directional movements
- Accommodates for thermal movement

Applications:

- Conversion on Truck Scales, Cattle Scales & Platform Scales





Complete Kit Includes

- ✓ 102BH Load Cells
- ✓ 102BHM1 Mounts
- ✓ Junction Box (Signal or Exc)
- ✓ Load Cell Cable

Part Number / Capacity	J-Box	Cable
4 Module Kit	*J-Box (specify model when ordering)	
MK4-102BHM1- 50Klb -E	J04EA-16	1 roll (20m/65ft)
MK4-102BHM1- 60Klb -E		
MK4-102BHM1- 75Klb -E		
6 Module Kit	*J-Box (specify model when ordering)	
MK6-102BHM1- 50Klb -E	J06ES	1 roll (20m/65ft)
MK6-102BHM1- 60Klb -E		
MK6-102BHM1- 75Klb -E		
8 Module Kit	*J-Box (specify model when ordering)	
MK8-102BHM1- 50Klb -E	J08ES	1 roll (20m/65ft)
MK8-102BHM1- 60Klb -E		
MK8-102BHM1- 75Klb -E		

Features

- Capacities (per module) 50,000-75,000 lb
- Center pivoted with self-aligning suspension link design
- Allows for multi-directional movements
- Accommodates for thermal movement
- Load Cell Approvals: NTEP, OIML, FM

Applications

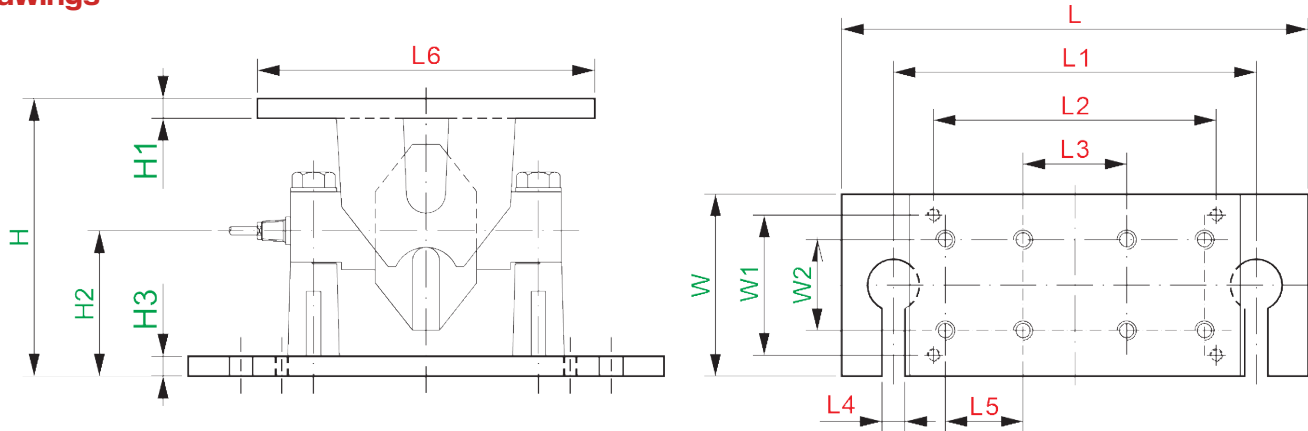
- Conversion on Truck Scales, Cattle Scales & Platform Scales

MK4 J-Box: Signal or Excitation / Aluminum, Stainless Steel or Fiberglass Enclosure

MK6 J-Box: Signal or Excitation

MK8 J-Box: Signal or Excitation / Aluminum, Stainless Steel or Fiberglass Enclosure

Drawings



Dimensions (inches)

Capacity	L6	H	H1	H2	H3	L	L1	L2	L3	L4	L5	W	W1	W2
50-75Klb	12.76	10.47	0.75	5.44	0.75	18.00	14.00	10.91	4.00	0.87	3.00	7.00	5.39	3.50

Sold by:

