

563RS Single Ended Beam STAINLESS STEEL

Features:

- 5kg-50kg: NTEP 1: 6 000 Class III, Single Cell;
NTEP 1: 10 000 Class III, Multiple Cell
- 100kg-500kg: NTEP 1:4 500 Class III, Single Cell;
NTEP 1:10 000 Class III, Multiple Cell
- 10kg-50kg: OIML MAA C6, Y=30 000;
- 100kg-500kg: OIML MAA C4, Y=30 000;
- Welded Seal: **IP68**

Options:

- Lightning Protection
- Rodent Protection
- FM, ATEX, IECEx Approved



SCAN FOR
PRODUCT PAGE



563RSM5 Weigh Module STAINLESS STEEL

For 563RS Load Cell

Features:

- Self-checking with anti-lifting protection
- Multi-directional overloading isolation for the load cell
- Equipped with lateral stops

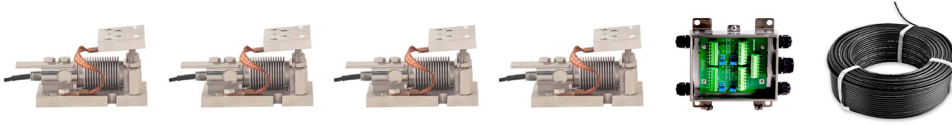
Applications:

- Medium capacity tanks, hoppers, blenders and conveyors



SCAN FOR
PRODUCT PAGE





Complete Kit Includes

- ✓ (4pcs) 563RS Load Cell
- ✓ (4pcs) 563RSM5 Weigh Modules
- ✓ (1pcs) J04SS Junction Box
- ✓ (1pcs) 65ft (20m) PVC cable

Part Number / Capacity	J-Box	Cable
Module Kit	*J-Box (specify model when ordering)	
MK4-563RSM5- 10kg-S	J04SS J-Box	1 roll (20m/65ft)
MK4-563RSM5- 20kg-S		
MK4-563RSM5- 50kg-S		
MK4-563RSM5- 100kg-S		
MK4-563RSM5- 200kg-S		
MK4-563RSM5- 500kg-S		

Features

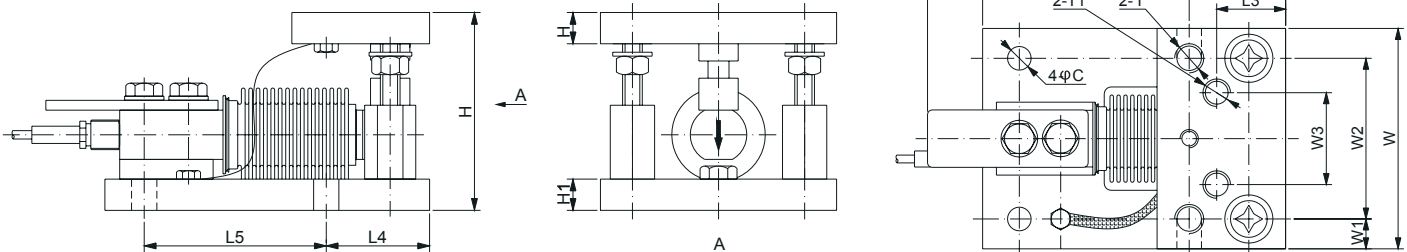
- Capacities (per module) 5kg-500kg
- Low maintenance, High performance
- Allowance for thermal expansion
- Uplift protection and overload protection
- IP68/IP69K certified waterproof construction

J-Box Options: Signal or Excitation / Aluminum, Stainless Steel or Fiberglass Enclosure

Applications

- Light capacity process weighing
- Small tank and hopper systems
- Washdown and corrosive environments

Drawings



Dimensions (inches)

Capacity	C	H	H1	L	L1	L2	L3	L4	L5	W	W1	W2	W3	T	T1
11.02-440.92lb	0.51	3.15	0.50	6.14	5.20	1.65	1.18	1.65	2.99	3.78	0.51	2.76	1.57	1/2-20 UNF	M12

Sold by: